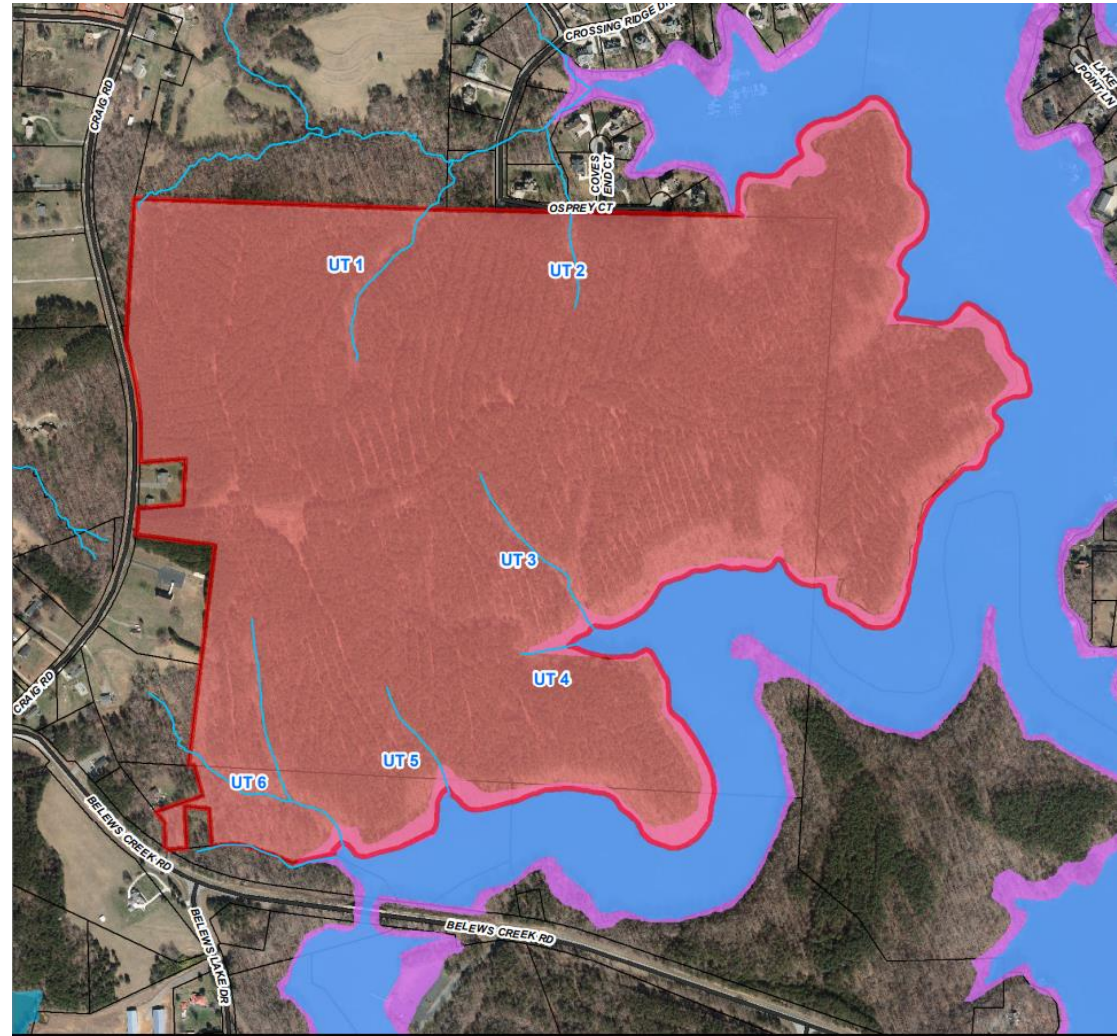


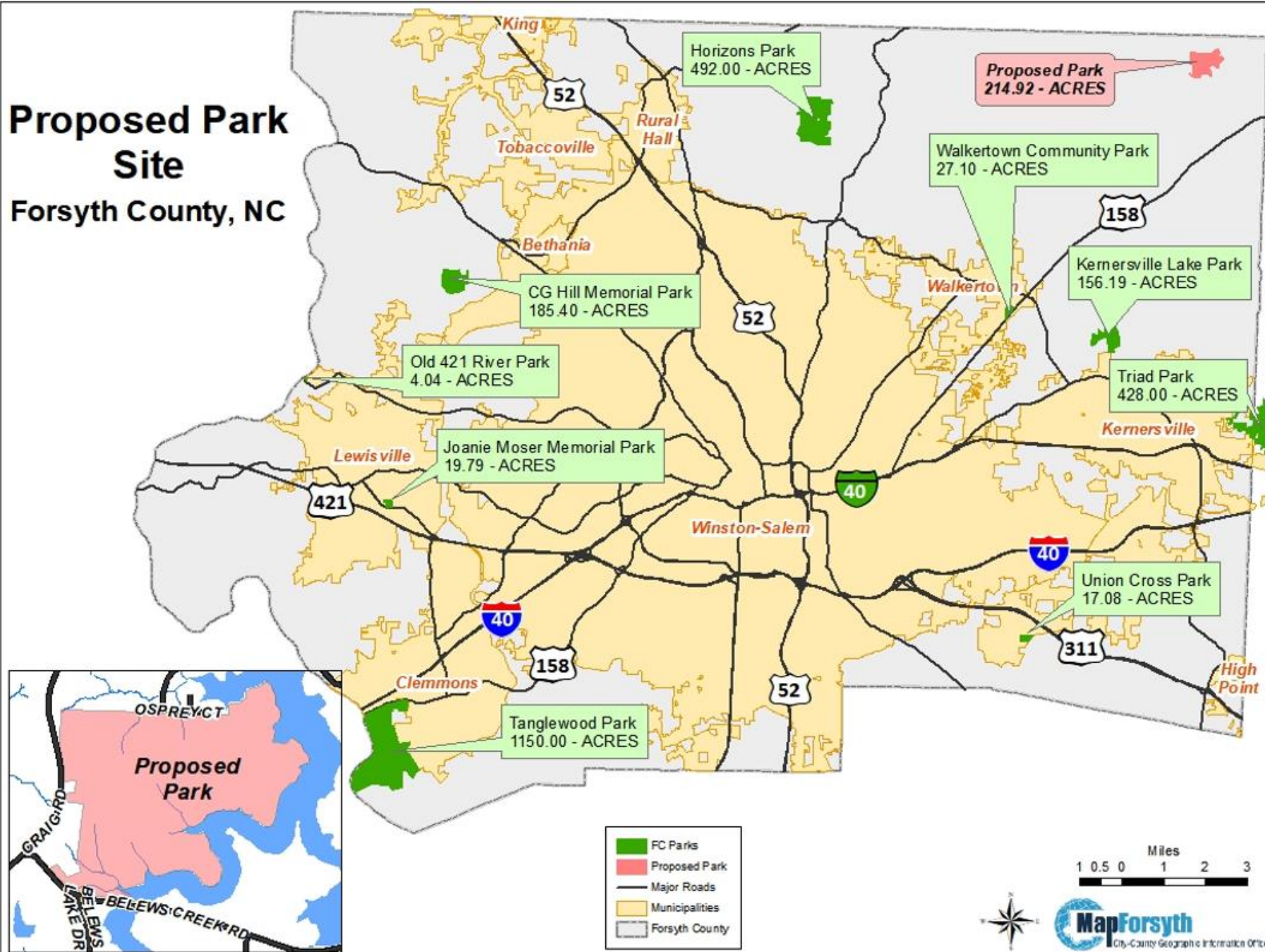
BELEWS LAKE PARK

Belews Lake Park



Proposed Park Site

Forsyth County, NC



Master Plan

- Maintenance Facility
- Picnic Shelters
- Walking Trails
- Event/Education Building (Phase 2)
- Playgrounds
- ADA Accessible Fishing Docks
- Comfort Stations









10.25.2017



Phase 1 Construction

- Site Development
- Maintenance Facility
- Comfort Station
- Picnic Shelter
- ADA accessible fishing dock
- Walking Trails

GMP: \$6,655,000 (Includes 3% D/B Fee)

Construction Contingency \$280,000

